

reference: PSA (Peugeot – Citroen), Belchamp France
realization: 2008 - 2009
description: Control and measurement equipment for automotive testing devices

(components: (ABB, Schneider Electric, Atos, Pilz, Convergence, Siemens etc.)

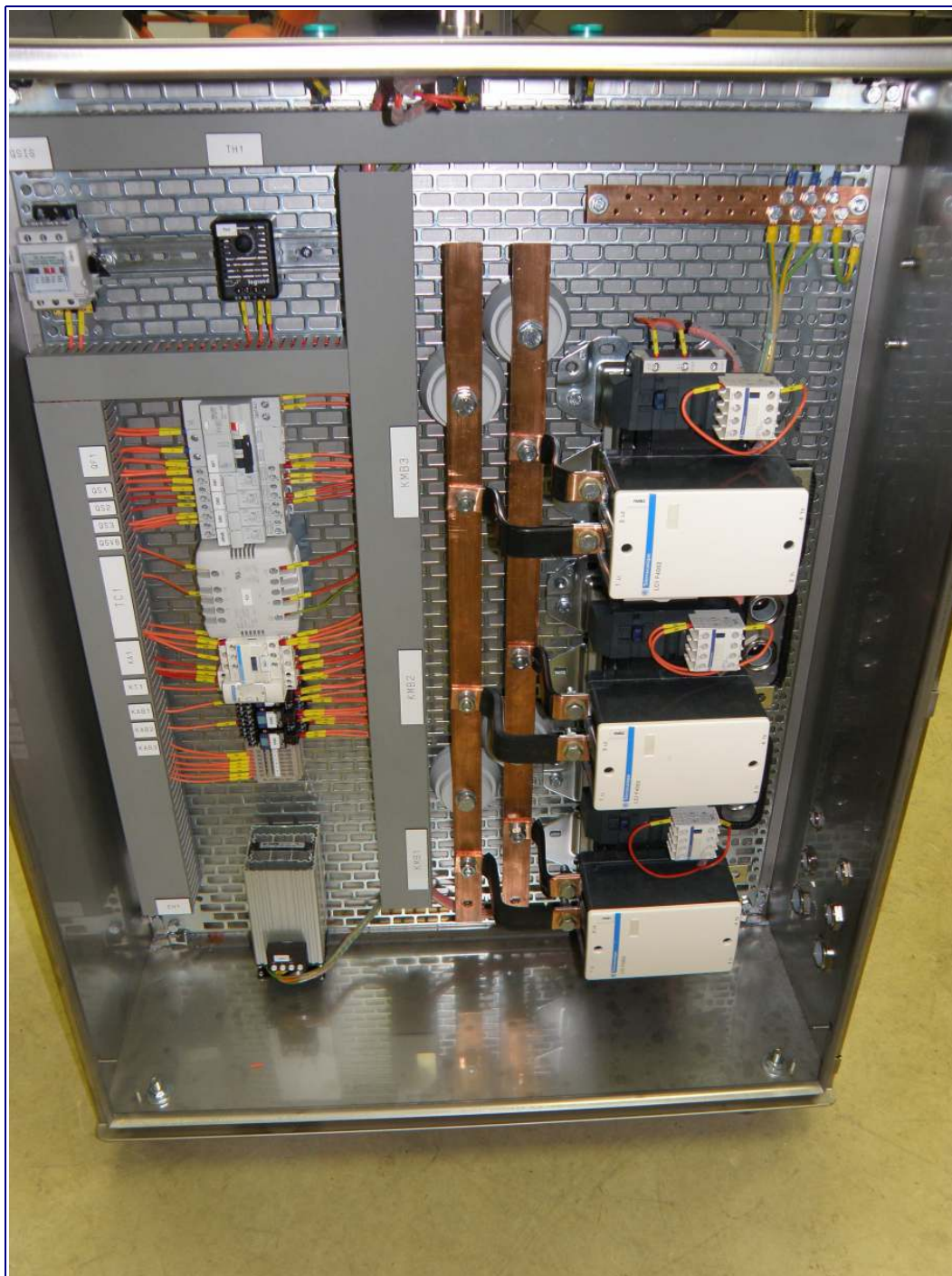
ReguCon, s.r.o., Lopatecká 9, 14700 Praha 4 - Podolí, tel.: 272 739 683, Fax: 271 733 694, email: info@regucon.cz
IČO: 61461172 DIČ: CZ61461172





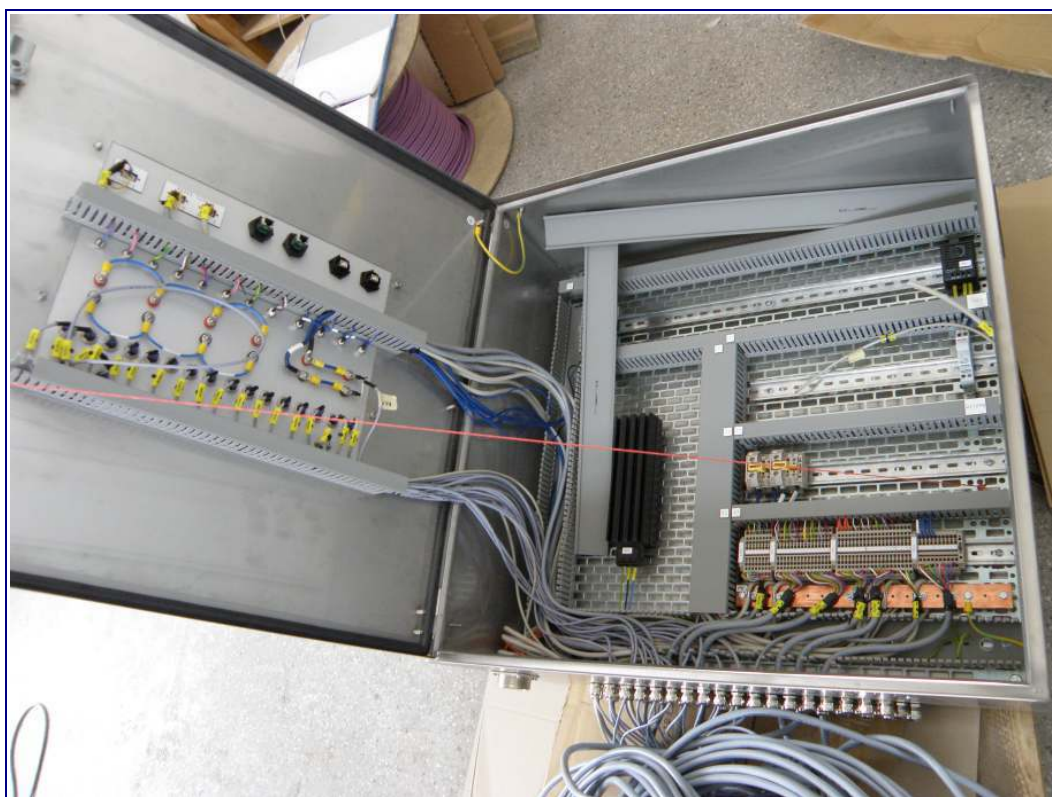
reference: PSA (Peugeot – Citroen), Belchamp France
realization: 2008 - 2009
description: Control and measurement equipment for automotive testing devices

(components: (ABB, Schneider Electric, Atos, Pilz, Convergje, Siemens etc.)



reference: PSA (Peugeot – Citroen), Belchamp France
realization: 2008 - 2009
description: Control and measurement equipment for automotive testing devices

(components: (ABB, Schneider Electric, Atos, Pilz, Convergje, Siemens etc.)





reference: PSA (Peugeot – Citroen), Belchamp France
realization: 2008 - 2009
description: Control and measurement equipment for automotive testing devices

(components: (ABB, Schneider Electric, Atos, Pilz, Convergje, Siemens etc.)