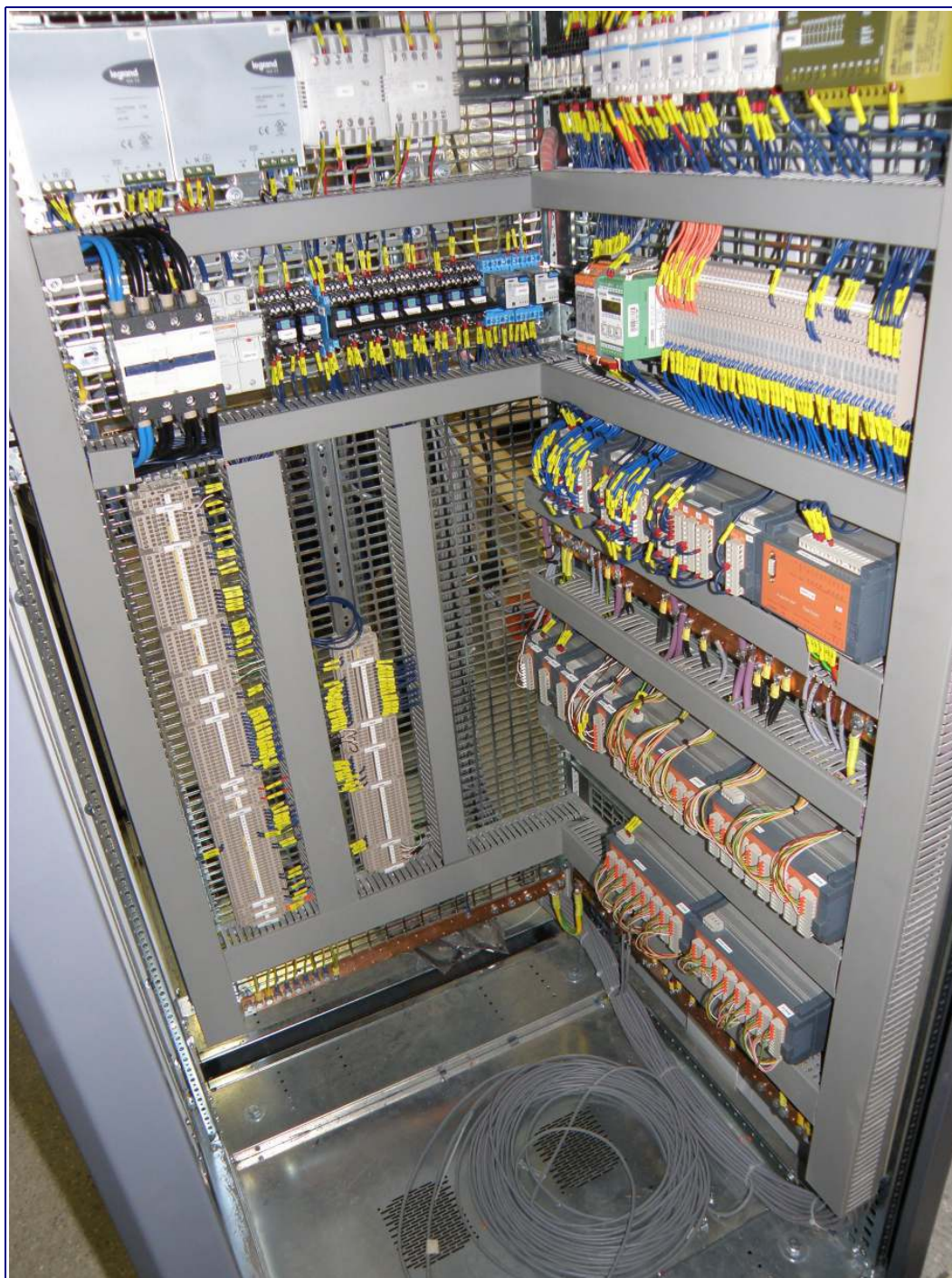




**reference:** PSA (Peugeot – Citroen), Belchamp France  
**realization:** 2008 - 2009  
**description:** Control and measurement equipment for automotive testing devices

(components: (ABB, Schneider Electric, Atos, Pilz, Convergie, Siemens etc.)





**reference:** PSA (Peugeot – Citroen), Belchamp France  
**realization:** 2008 - 2009  
**description:** Control and measurement equipment for automotive testing devices

(components: (ABB, Schneider Electric, Atos, Pilz, Convergje, Siemens etc.)

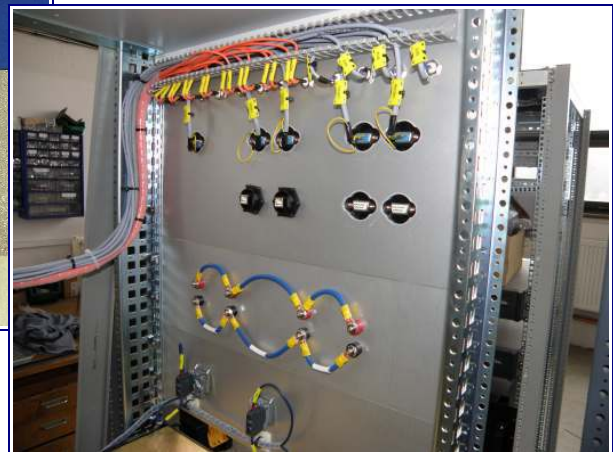
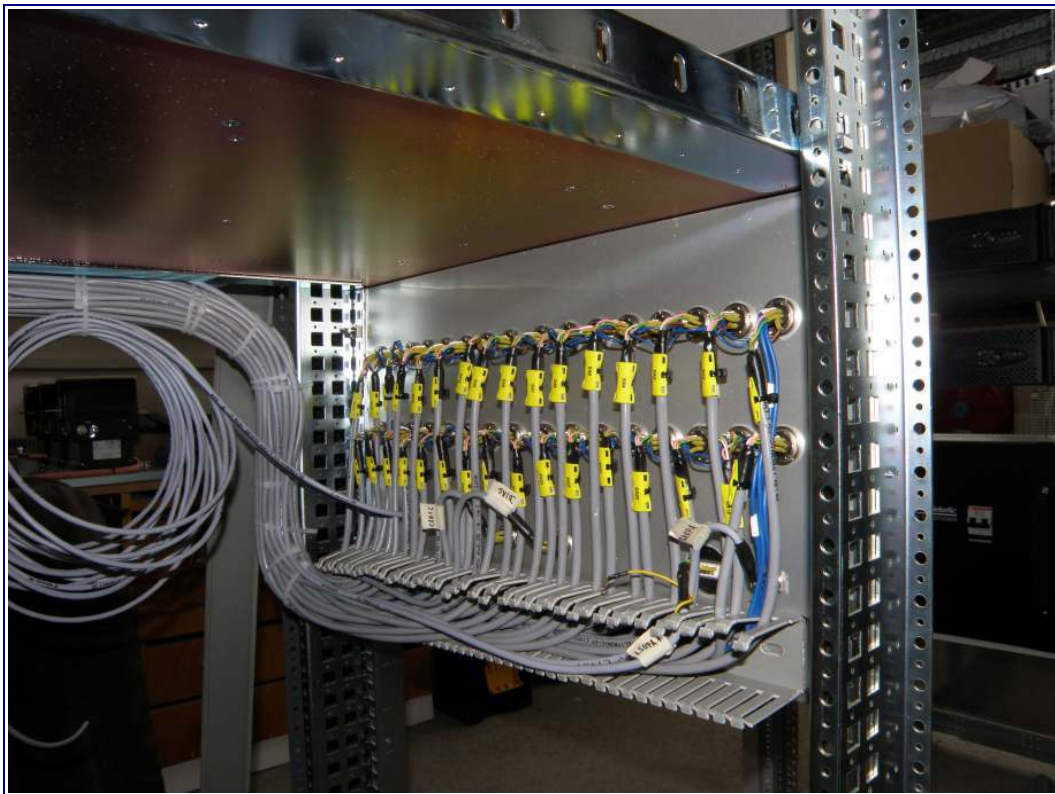
ReguCon, s.r.o., Lopatecká 9, 14700 Praha 4 - Podolí, tel.: 272 739 683, Fax: 271 733 694, email: info@regucon.cz  
IČO: 61461172 DIČ: CZ61461172





**reference:** PSA (Peugeot – Citroen), Belchamp France  
**realization:** 2008 - 2009  
**description:** Control and measurement equipment for automotive testing devices

(components: (ABB, Schneider Electric, Atos, Pilz, Convergie, Siemens etc.)



**reference:** PSA (Peugeot – Citroen), Belchamp France  
**realization:** 2008 - 2009  
**description:** Control and measurement equipment for automotive testing devices

(components: (ABB, Schneider Electric, Atos, Pilz, Convergje, Siemens etc.)