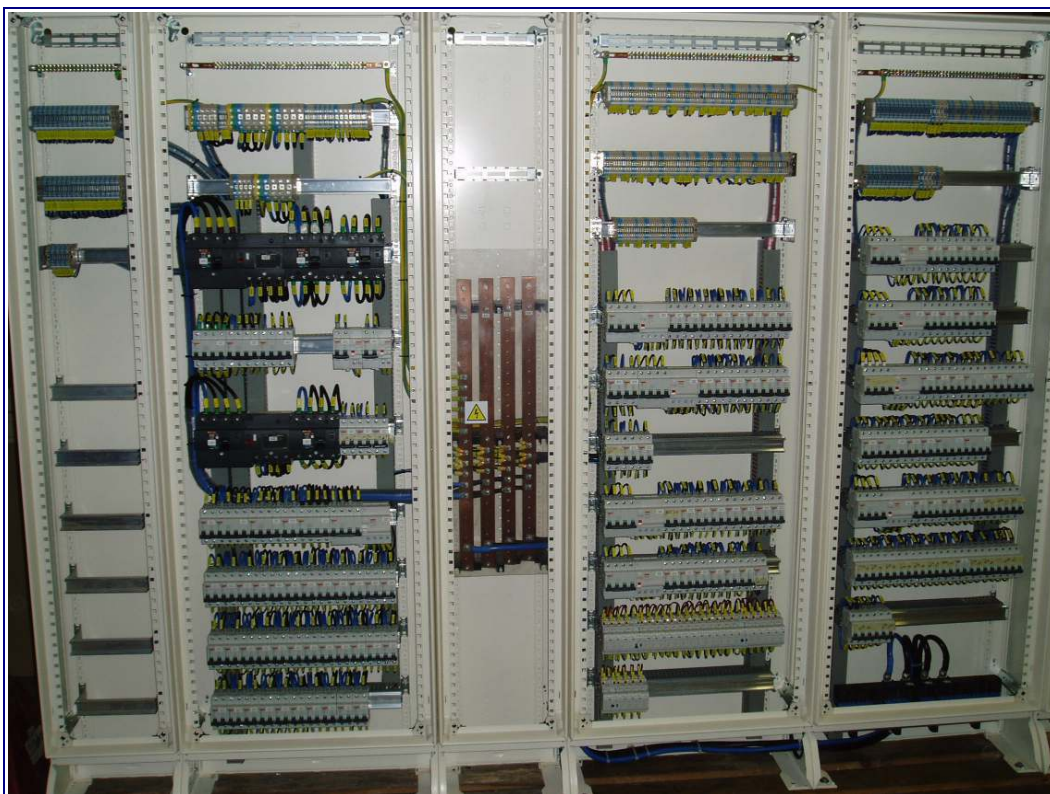
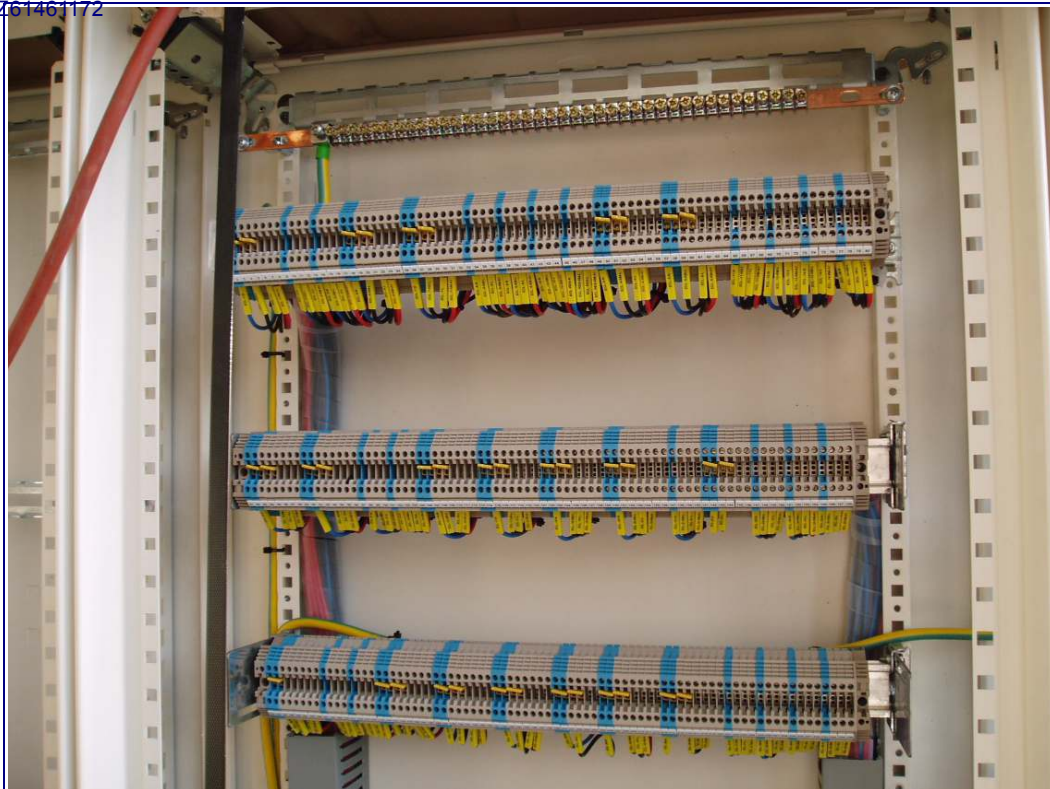


reference: SPIE Est France
realization: 2008
description: switchgears for university in Strasbourg, cruiser on Rhine
(components: PRISMA S, G, P - Schneider Electric)



reference: SPIE Est France
realization: 2008
description: switchgears for university in Strasbourg, cruiser on Rhine
(components: PRISMA S, G, P - Schneider Electric)

